

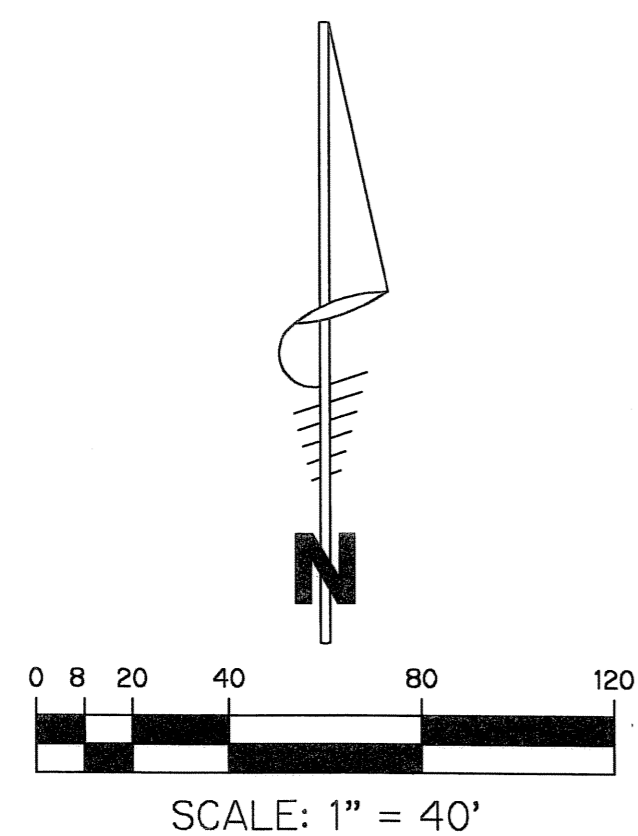
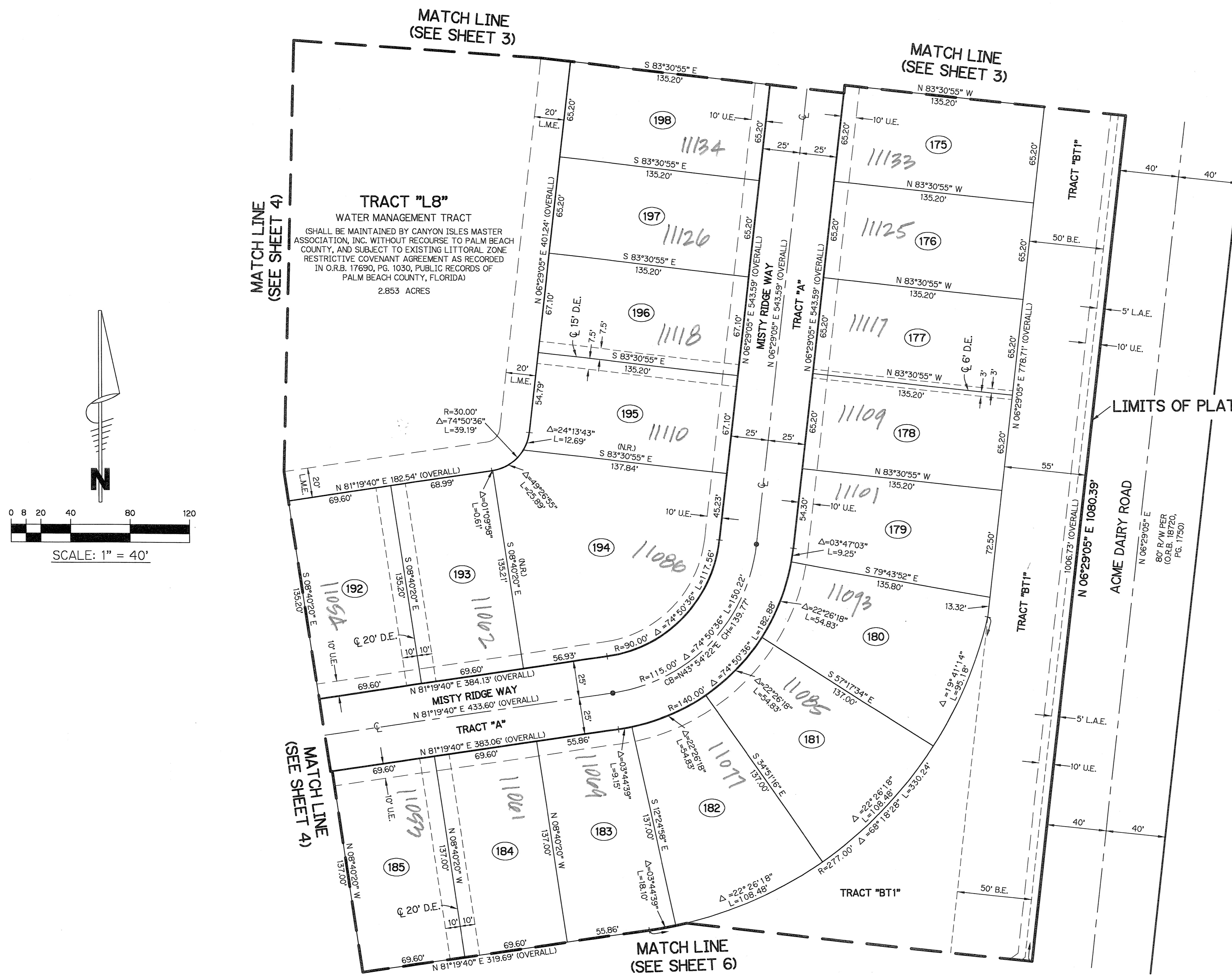
CANYON ISLES (A.K.A. FOGG CENTRAL) PLANNED UNIT DEVELOPMENT

# CANYON ISLES - PLAT THREE

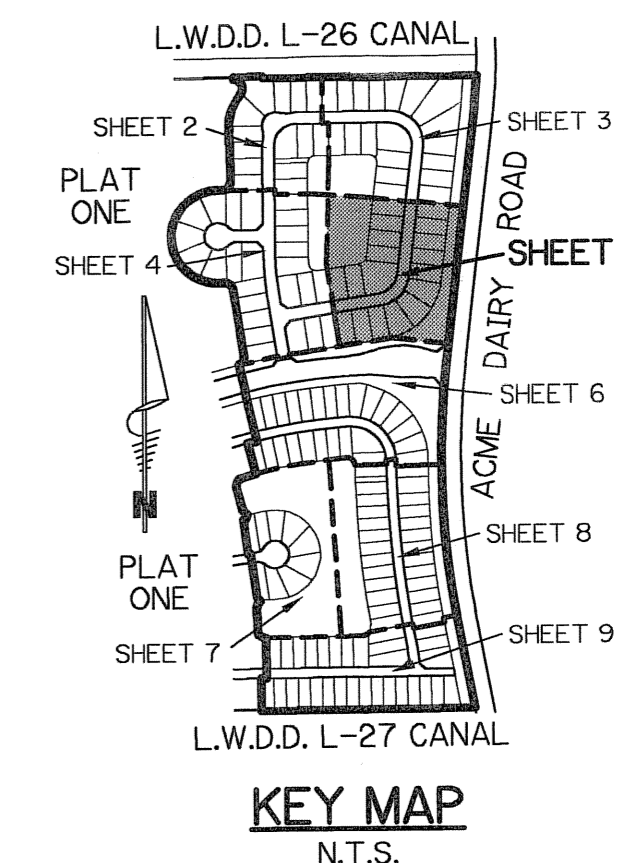
A PARCEL OF LAND IN SECTION 32, TOWNSHIP 45 SOUTH, RANGE 42 EAST, PALM BEACH COUNTY, FLORIDA, BEING A PORTION OF TRACTS 6-10, 23-27, 38-41, AND 56-59, BLOCK 59, PALM BEACH FARMS Co. PLAT No.3, RECORDED IN PLAT BOOK 2, PAGE 45, OF THE PUBLIC RECORDS OF PALM BEACH COUNTY, FLORIDA

SHEET 5 OF 9 JULY, 2004

**B** BROWN & PHILLIPS, INC.  
CERTIFICATE OF AUTHORIZATION # LB 6473  
901 NORTHPOINT PARKWAY, SUITE 305  
WEST PALM BEACH, FLORIDA 33407  
561-615-3988, 561-615-3986 FAX



- LEGEND:**
- - SET PERMANENT REFERENCE MONUMENT, L.B. #6473
  - - FOUND PERMANENT REFERENCE MONUMENT, L.B. #6473
  - - SET PERMANENT CONTROL POINT, L.B. #6473
  - - FOUND PERMANENT CONTROL POINT, L.B. #6473
  - △ - DELTA ANGLE
  - B.E. - BUFFER EASEMENT
  - CB - CHORD BEARING
  - CH - CHORD DISTANCE
  - C - CENTERLINE
  - D.B. - DEED BOOK
  - D.E. - DRAINAGE EASEMENT
  - L - ARC LENGTH
  - L.A.E. - LIMITED ACCESS EASEMENT
  - L.M.A.E. - LAKE MAINTENANCE ACCESS EASEMENT
  - L.M.E. - LAKE MAINTENANCE EASEMENT
  - L.W.D.D. - LAKE WORTH DRAINAGE DISTRICT
  - N.R. - NOT RADIAL
  - N.T.S. - NOT TO SCALE
  - O.R.B. - OFFICIAL RECORD BOOK
  - O.E. - OVERHANG EASEMENT
  - P.B. - PLAT BOOK
  - P.C.P. - PERMANENT CONTROL POINT
  - PGS. - PAGES
  - P.O.B. - POINT OF BEGINNING
  - P.O.C. - POINT OF COMMENCEMENT
  - P.S.M. - PROFESSIONAL SURVEYOR AND MAPPER
  - R - RADIUS
  - R/W - RIGHT-OF-WAY
  - U.E. - UTILITY EASEMENT



SUBDIVISION CANYON ISLES - PLAT 3  
 BOOK 106 PAGE 65  
 FLOOD ZONE B FLOOD MAP # 200A  
 QUAD # 50 ZONING PFD  
 SE ZIP CODE 33449  
 TAZ 750  
 POD NAME FOGG CENTRAL